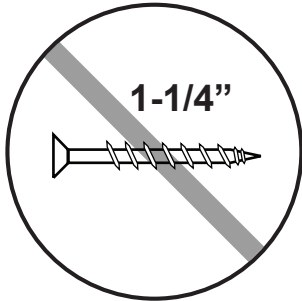


1-1/4" SCREW AND SWING HANGER ADDEDNDUM

!! IMPORTANT - READ THIS ADDENDUM FIRST !!!

THERE ARE NO 1-1/4" WOOD SCREWS IN THE FASTENER BAGS. YOU WILL USE THE 1-3/16" SCREWS.

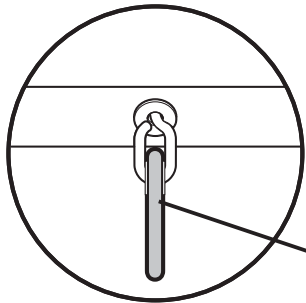
USE THIS SWING HANGER INSTALL ADDENDUM IN PLACE OF THE SWING HANGER INSTALL METHOD IN YOUR PLAYSET INSTRUCTIONS. YOU MUST USE THE QUICK LINK SUPPLIED TO INSTALL YOUR SWINGS.



1-1/4"

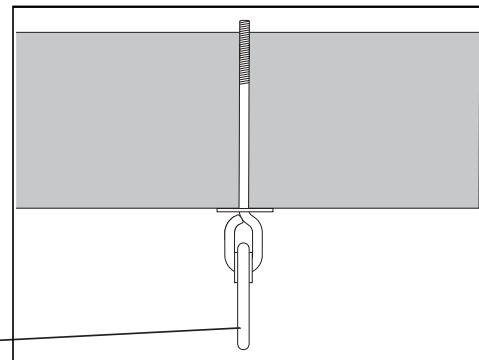
**WHEREVER YOUR INSTRUCTIONS
CALLOUT USING THE 1-1/4"
SCREW USE THE 1-3/16" SCREW**

1-3/16"



IMPORTANT!

Final position of each Spring Clip is perpendicular to swing beam.



PF 6299
2 5/8" x 5-3/8" x 93"
Swing Beam

Swing Hanger Bolt must protrude at least
TWO Threads beyond Lock Nut.



IMPORTANT!

2 Threads MIN.

Lock Nut
1-3/8" Washer

Use a socket
wrench to tighten
Lock Nut securely
against washer.

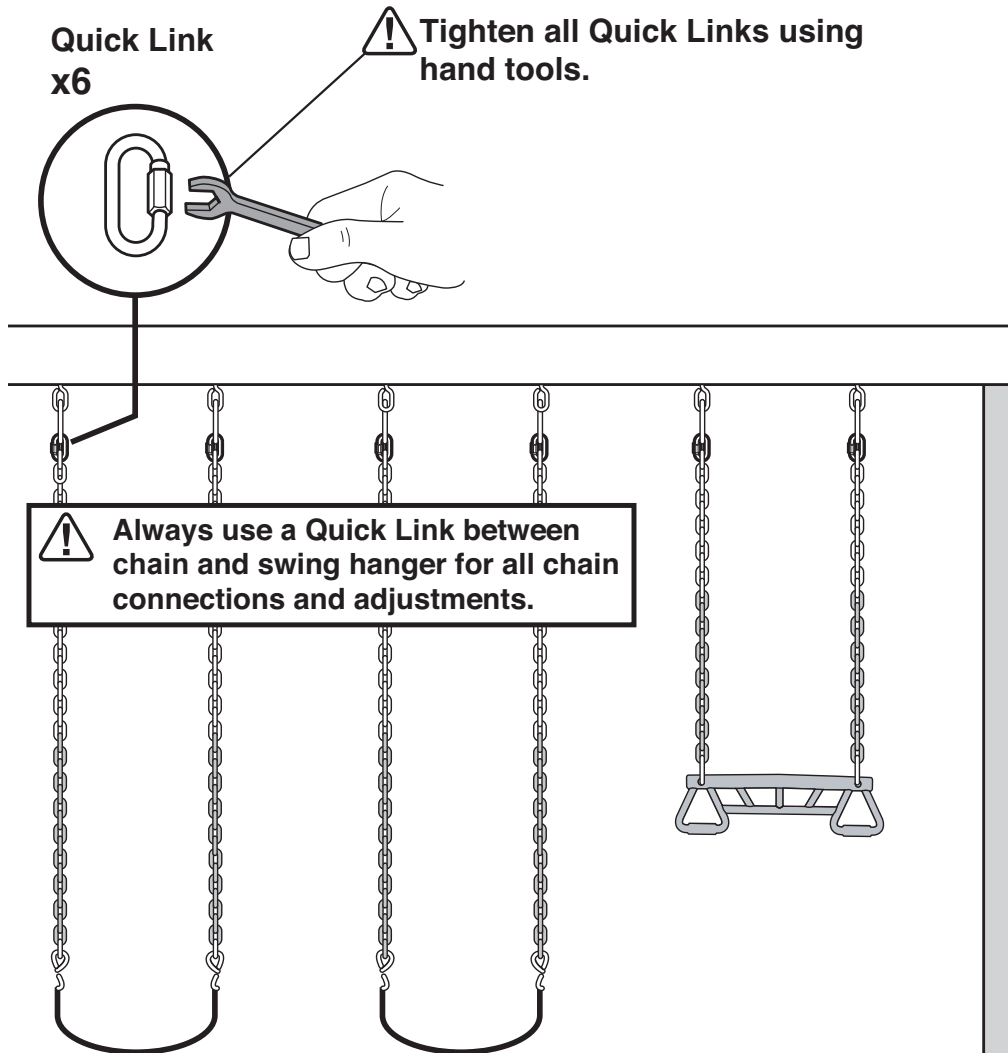
HOLD position of
Swing Hanger while
tightening Lock Nut.

NOTE: You may need to tap hanger with a hammer to get through beam.

1. Attach Swing Hanger(s) to swing beam as shown.

SWING CHAIN TO HANGER

Attach a Quick-Link at the end of each swing and trapeze chain. Then, using the Quick-Links, attach the swings and trapeze to the Hanger Spring Clips on the swing beam, as shown below.



Note: Your swing and trapeze may differ from the ones shown.

Questions?

Call our Customer Support Representatives

1.800.888.1232

Thank you